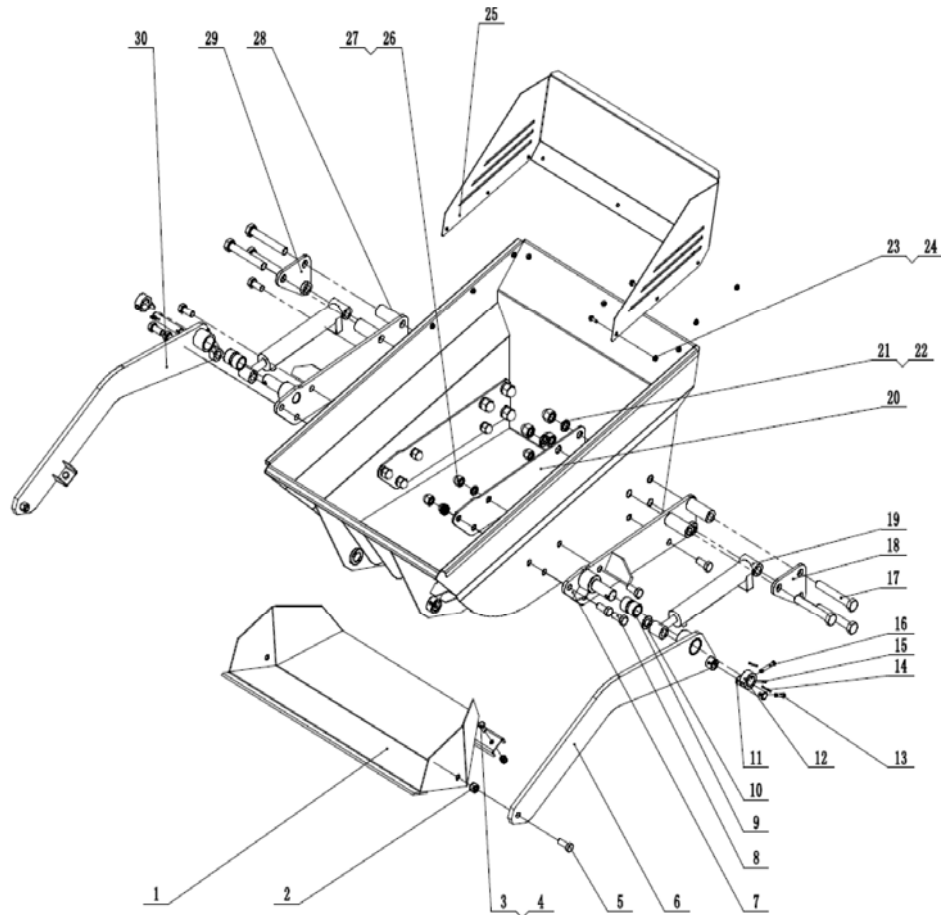


SPARE PARTS LIST

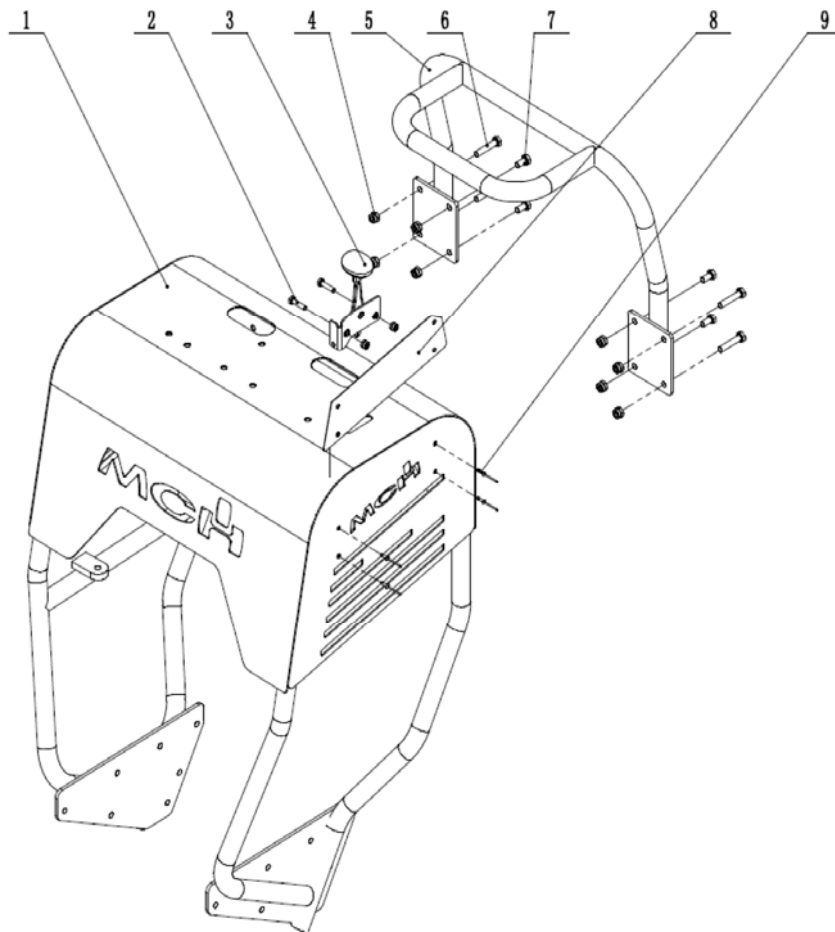
MINIDUMPER SERIE HYDRO 560

REV. 2/2018

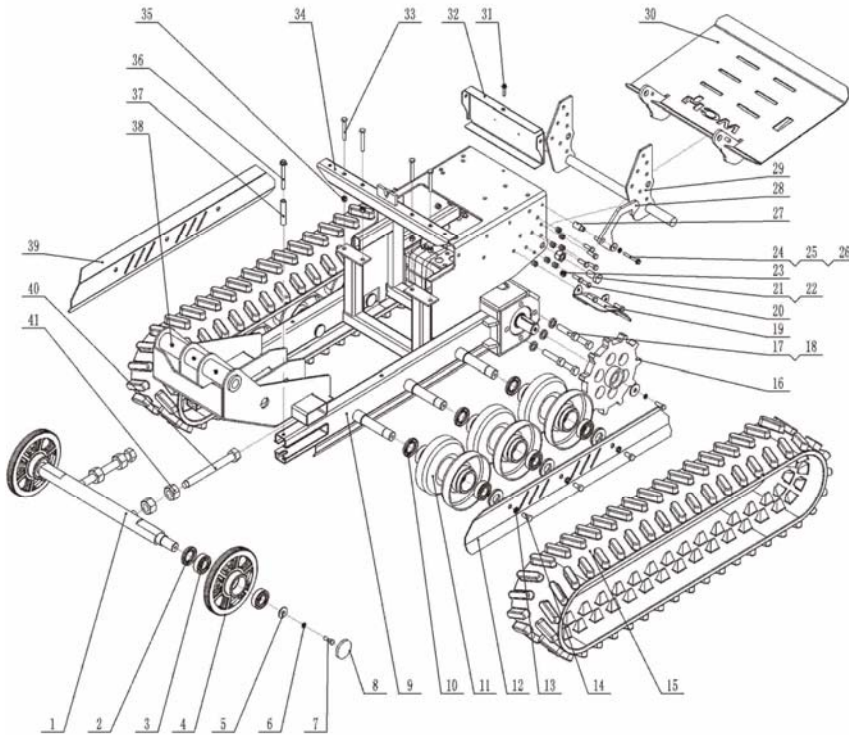




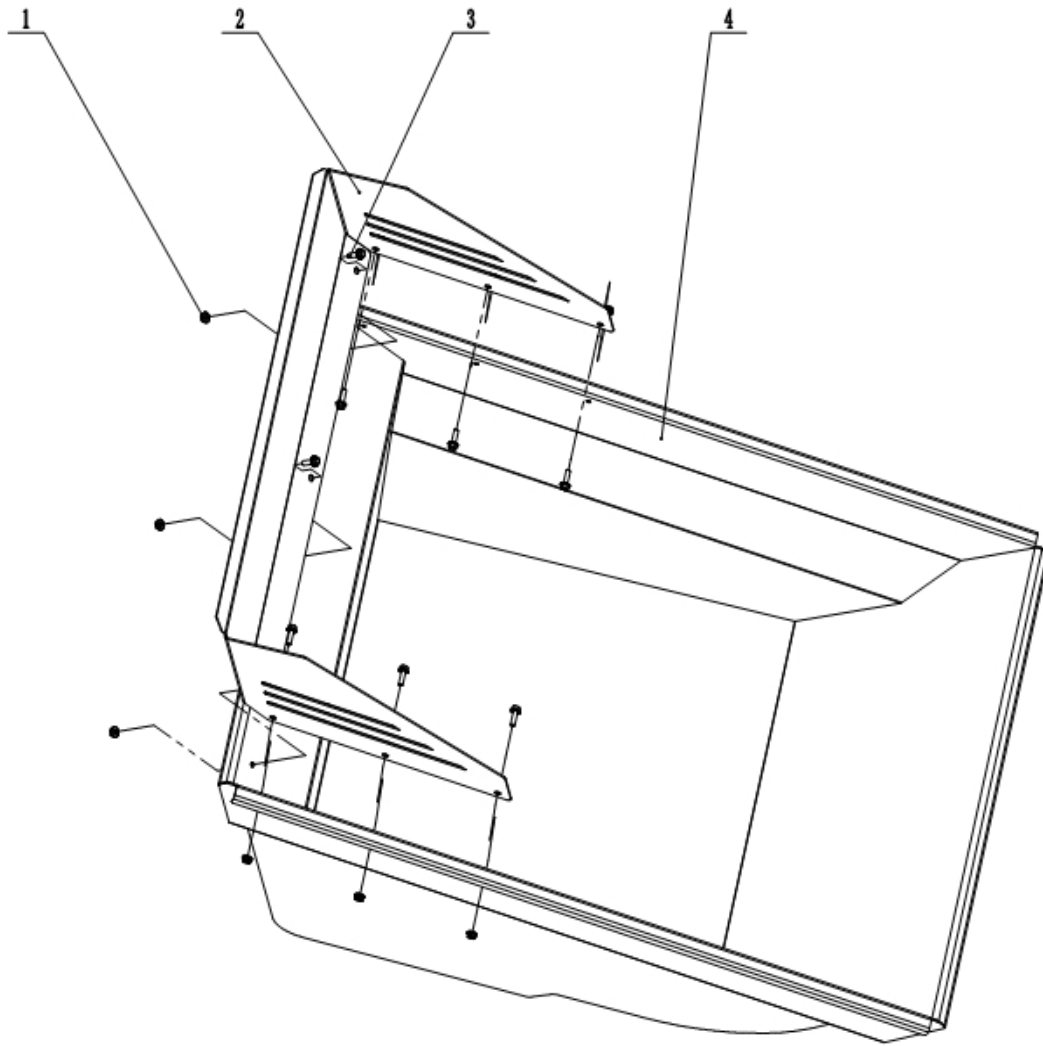
Ref No	Part No	Description	Qty
1	MJCH500-03-12	Bucket	1
2	GB/T 889.1	M14 lock nut	2
3	GB/T 889.1	M10 lock nut	2
4	GB5782	M10x25 hex bolts	2
5	GB5782	M14x35 hex bolts	2
6	MJCH500-03-09	left arm	1
7	MJCH500-03-04	leftarm support	1
8	GB5782	M16x40 hex bolts	8
9	MJCH500-03-08	bush III	2
10	GB/T95-2001	Ø20 flat washer	2
11	MJCH500-18	Ø20 pin roll	2
12	MJCH500-03-11	Arm mounting sleeve	2
13	GB/T 882	Ø8x35 straight pin	2
14	GB/T 91	2x30 splitpin	4
15	GB/T 91	5x50 splitpin	2
16	GB/T 882	Ø8x45 straight pin	2
17	GB5782	M20x130 hex bolts	6
18	MJCH500-03-06	left side plate	1
19	MJCH500-09	hydraulic cylinder G40/20-164	2
20	MJCH500-03-05	The inner container plate	2
21	GB/T93-1987	20 Spring Washer	6
22	GB/T802-88	M20 Round nut	6
23	GB5782	M6x16 hex bolts	9
24	GB/T 889.1	M6 lock nut	9
25	MJCH500-03-02	Container fence	1
26	GB/T93-1987	Ø16 Spring Washer	8
27	GB/T802-88	M16 Round nut	8
28	MJCH500-03-03	arm support L	1
29	MJCH500-03-07	right side plate	1
30	MJCH500-03-10	right arm	1



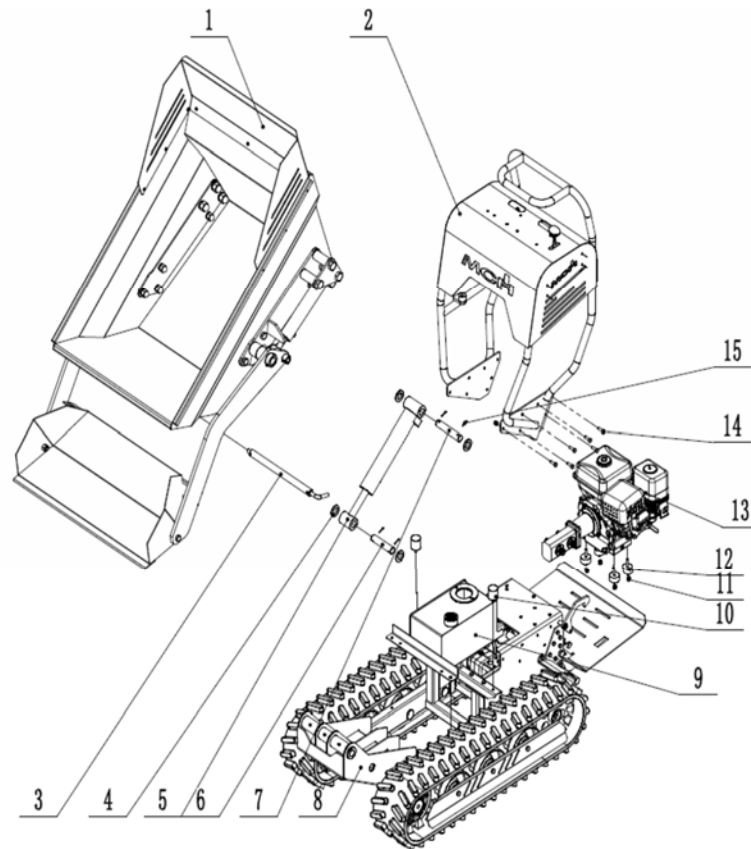
Ref No	Part No	Description	Qty
1	MJCH500-01-01	Operating table welding assembly	1
2	GB/T 5782	M8x30 bolt	2
3	1LT01058A	Throttle switch assembly	1
4	GB/T 889.1	M8 lock nut	10
5	MJCH500-01-02	Operating table arm welding assembly	1
6	GB/T 5782	M8x45 bolt	4
7	GB/T 5782	M8x20 bolt	4
8	MJCH500-01-04	Operating table inner plate	2
9	GB/T12618-1990	6x10 All round head rivets	8



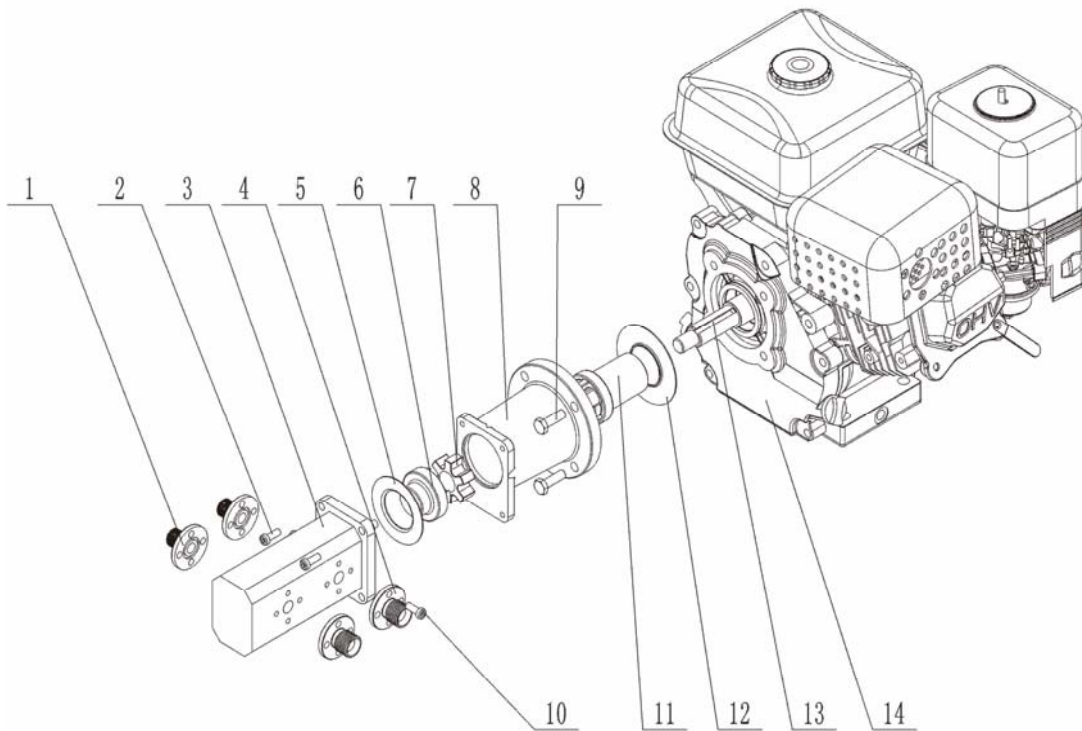
Ref No	Part No	Description	Qty
1	MJCH500-02-04	Guide Axle	1
2	GB/T13871.1	30X52X10 framework oil seal	8
3	GB/T267-1994	6205Z deep groove ball bearing p6	16
4	MJCH500-02-03	guide wheel	2
5	Ø8X3ØX3	Ø8X3ØX3 oversize flat washer	4
6	GB/T93-1987	Ø8 spring washer	4
7	GB/T 5782	M8X25 hex bolts	4
8	Ø52X7	52X7 Cap seal	2
9	MJCH500-02-01	The main welding assembly	1
10	GB/T13871.1	25X52X10 framework oil seal	6
11	MJC500-02-00-03	thrust wheel	6
12	MJCH500-02-10	Roller outer plate	1
13	GB/T93-1987	Ø10spring washer	10
14	GB/T 5782	M10X30	6
15	180x60x38	Rubber track	2
16	MJCH500-02-02		2
16	GB/T 5782	M14X50 M14%x35 hex bolts	8
17	GB/T93-1987	Ø14 Spring Washer	8
18	MJCH500-06	fender group	2
19	GB/T 5782	M8X25 hex bolts	16
20	GB/T 5782	M16X40 hex bolts	2
21	GB/T 889.1	M16 lock nut	2
22	GB/T 889.1	M8 lock nut	16
23	GB/T 5782	M6X50hex bolts	1
24	GB/T93-1987	Ø6spring washer	3
25	GB/T96.2-2002	Ø6 big flat washer	1
26	MJCH500-05-02	Pedal buckle mounting sleeve	1
27	MJCH500C-05-01	Pedal buckle welding assembly	1
28	MJCH500-07	Pedal support shaft welding assembly	1
29	MJCH500-04	Pedal pad	1
30	GB/T 5782	M6X20 M14%x35 hex bolts	2
31	MJCH500-16	engine rear support cap	1
32	GB/T 5782	M10X60 bolt	4
33	MJCH500-02-11	Container support tube welding assembly	1
34	GB/T 889.1	M10 lock nut	4
35	GB/T 5782	M8X95	2
36	MJCH500-02-07	The main chute reinforcing sleeve	2
37	JB/T7940.1-1995	M6 Straight cup	3
38	MJCH500-02-09	roller retainer plate	1
39	MJCH500-02-08	M24 bolt	2
40	GB/T6170-2000	M24 nut	2



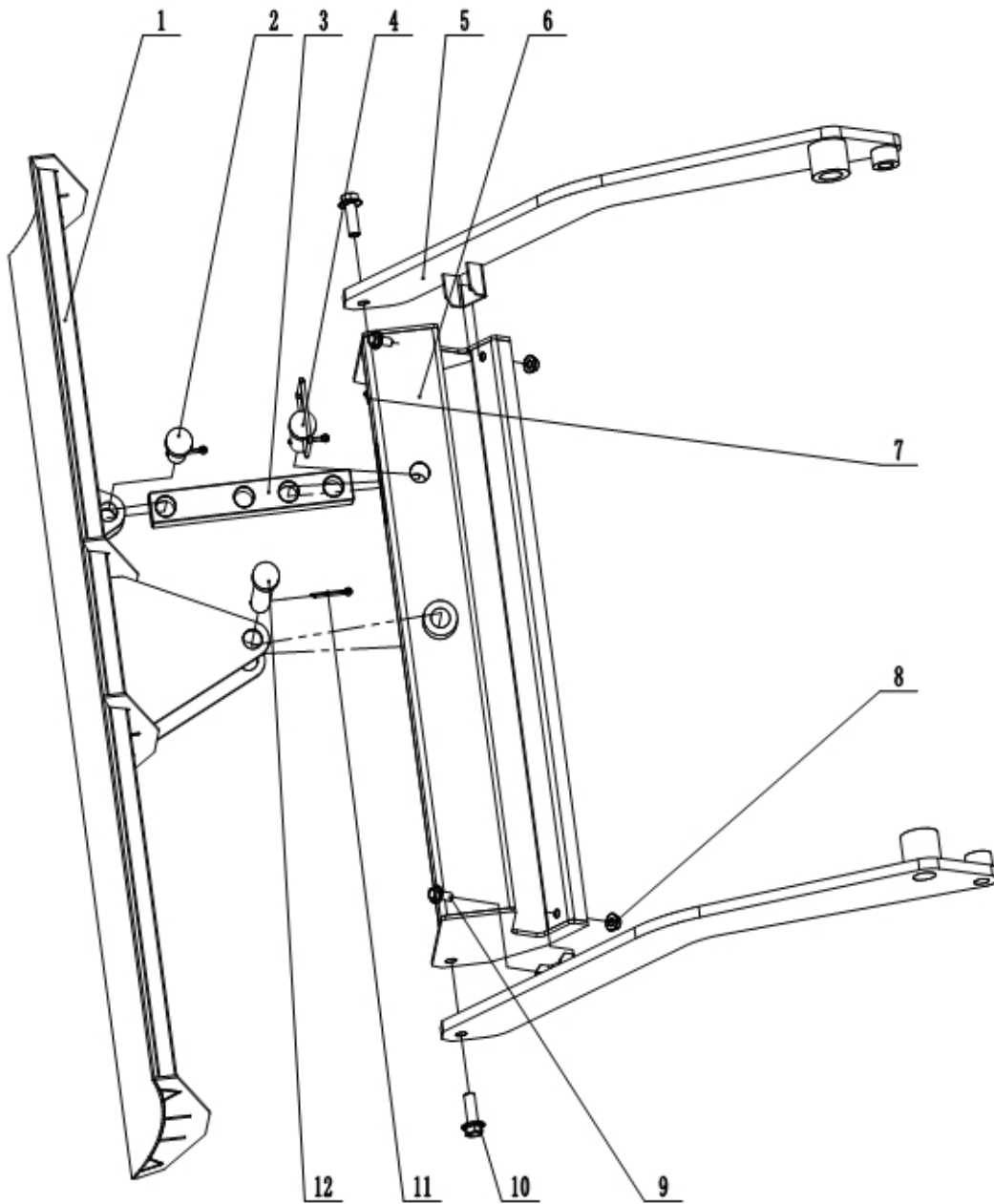
Ref No	Part No			Description	Qty
1	GB/T6177.1-2000			M6 nut	9
2	MJCH500-03-02			Container fence	1
3	GB/T5789-2000			M6x16 bolt	9
4	MJCH500-03-01			Container welding assembly	1



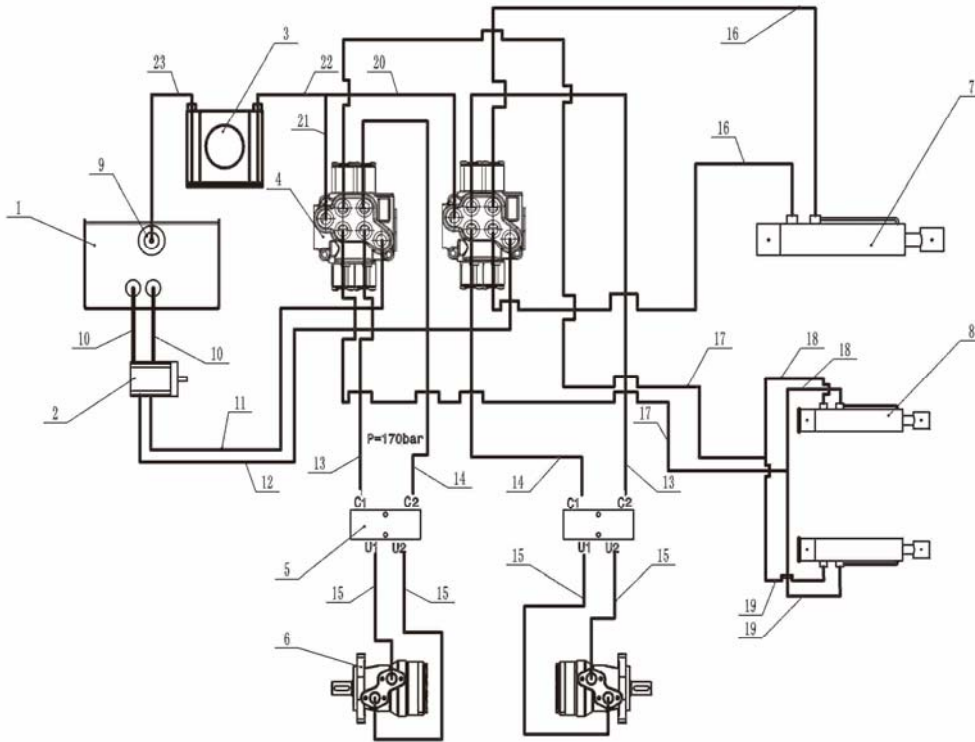
Ref No	Part No		Description	Qty
1	MJCH500-03		Container assembly	1
2	MJCH500-01		Operating table assembly	1
3	MJCH500-08		Container connecting shaft	1
4	GB/T95-2002		Ø20 flat washer	4
5	MJCH500-10		hydraulic cylinder G50/25-224	1
6	MJCH500-19-01		pin roll Ø25×113	1
7	MJCH500-19-02		pin roll Ø25×120	1
8	MJCH500-02		chassis assembly	1
9	MJCH500-17		Fuel tank assembly	1
10	MJCH500-26		The box supporting rubber pad	2
11	GB/T 889.1		M8 lock nut	22
12	MJCH500-27		engine support rubber	4
13			M210 engine	1
14	GB5782		M8×25 hex bolts	14
15	GB/T 91		5×50 cotter pins	4



Ref No	Part No			Description	Qty
1	MJCH500-30			connector	2
2	GB/T70.1-2008			bolt	4
3	BKP1/1BOD2.7/2 .7TOEO/EO-E			tandem pump	1
4	MJCH500-30			connector	2
5	MJCH500-20-04			disc	1
6	MJCH500-20-02			connector	1
7	MJCH500-20-03			rubber connector	1
8	MJCH500-21			bell housing	1
9	GB/T5789-2000			bolt	4
10	GB/T70.1-2008			bolt	16
11	MJCH500-20-01			connector	1
12	MJCH500-20-05			disc	1
13	4.78x4.78x40			key	1
14				engine	1



Ref No	Part No			Description	Qty
1	MJCH500-37-01			Sled welding assembly	1
2	MJCH500-37-02			Pin axis I	1
3	MJCH500-37-03			adjustable plate	1
4	MJCH500-37-04			An adjusting bolt	1
5	MJCH500-37-05			Swing arm assembly	1
6	MJCH500-37-06			Sled support frame welding assembly	1
7	GB/T6177.1-2000			M14 nut	2
8	GB/T6177.1-2000			M10 nut	2
9	GB/T5789-2000			M10x30 bolt	2
10	GB/T5789-2000			M14x40 bolt	2
11	GB/T91-2000			cotter pins	3
12	MJCH500-37-07			Pin axis II	1



1	MJCH500-17-01			Tank	1
2	BKP1/1BOD2.7/2.7TOEO/EO-E			Gear pump	1
3	AF1025T			Cooling	1
4	MJCH500-11			valve spool	2
5	A-VNR-CS-DE-14-LC-Z			Overcenter valve	2
6	BMSY-200-E4BDBLL			hydraulic moto	2
7	MJCH500-10			hydraulic cylinder I	1
8	MJCH500-09			hydraulic cylinder II	2
9	DPL-QH-0002			Filtrer	1
10	1/2"x395 3-3 a=90°			1 hydraulic tube	2
11	3/8 "x960 3-3 a=270°			2 hydraulic tube	1
12	3/8 "x600 3-3 a=180°			3 hydraulic tube	1
13	3/8"x300 1-3			4 hydraulic tube	2
14	3/8"x350 1-3			5 hydraulic tube	2
15	3/8"x550 1-1			6 hydraulic tube	4
16	1/4"x2350 3-3 a=225°			11 hydraulic tube	2
17	1/4x530 1-3			12 hydraulic tube	2
18	1/4"x2350 3-3 a=300°			13 hydraulic tube	2
19	1/4"x2350 1-3			14 hydraulic tube	2
20	3/8 "x170 3-3 a=360°			8 hydraulic tube	1
21	3/8"x400 1-3			7 hydraulic tube	1
22	3/8"x250 1-3			9 hydraulic tube	1
23	3/8 "x1300 3-3 a=90°			10 hydraulic tube	1